



Madison, Wisconsin

CITY OF MADISON

CITY ENGINEERING DIVISION

DEPARTMENT OF PUBLIC WORKS

PLAN OF PROPOSED IMPROVEMENT

INDEX OF SHEETS

SHEET NO.	E1-E4	ELECTRICAL PLAN - QUANN PARK
SHEET NO.	E5	ELECTRICAL PLAN - PENN PARK

QUANN PARK LIGHTING PROJECT

CITY PROJECT NO. 71022
CONTRACT NO. 9677

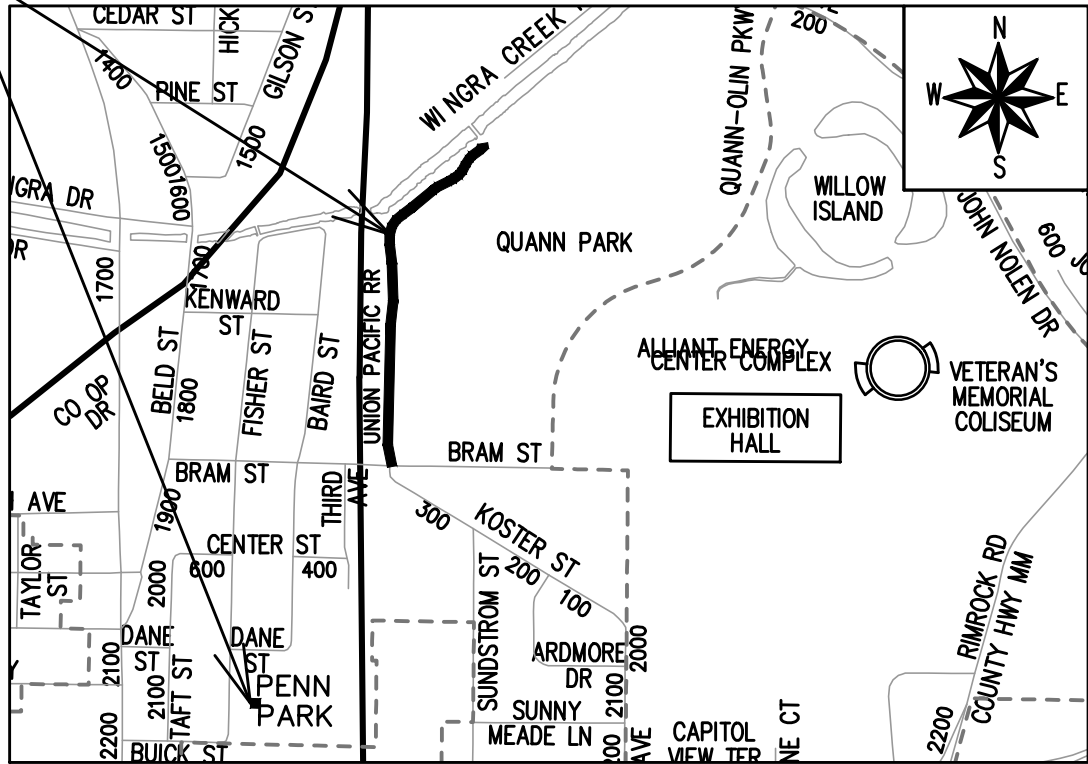
FEDERALLY FUNDED PROJECT

PROJECT LOCATION

CONVENTIONAL SIGNS
FIELD VERIFY ALL UTILITY LOCATIONS

GAS	— G —
STORM SEWER	— ST —
SANITARY SEWER	— SN —
WATER	— W —
BURIED ELECTRIC	— E —
OVERHEAD ELECTRIC	— OH —
POWER POLE	
ADA COMPLIANT RAMP W/ DETECTABLE WARNING FIELD	
COMBUSTIBLE FLUIDS	

NOTES:
- CITY MAINTENANCE PLAN NOT REQUIRED.



NO EARTH WORK REQUIRED

PUBLIC IMPROVEMENT PROJECT
APPROVED

JULY 15, 2025

BY THE COMMON COUNCIL
OF MADISON, WISCONSIN

PUBLIC IMPROVEMENT DESIGN
APPROVED BY:

07/30/2025

City Engineer

Date

ELECTRICAL
DESIGNED BY:



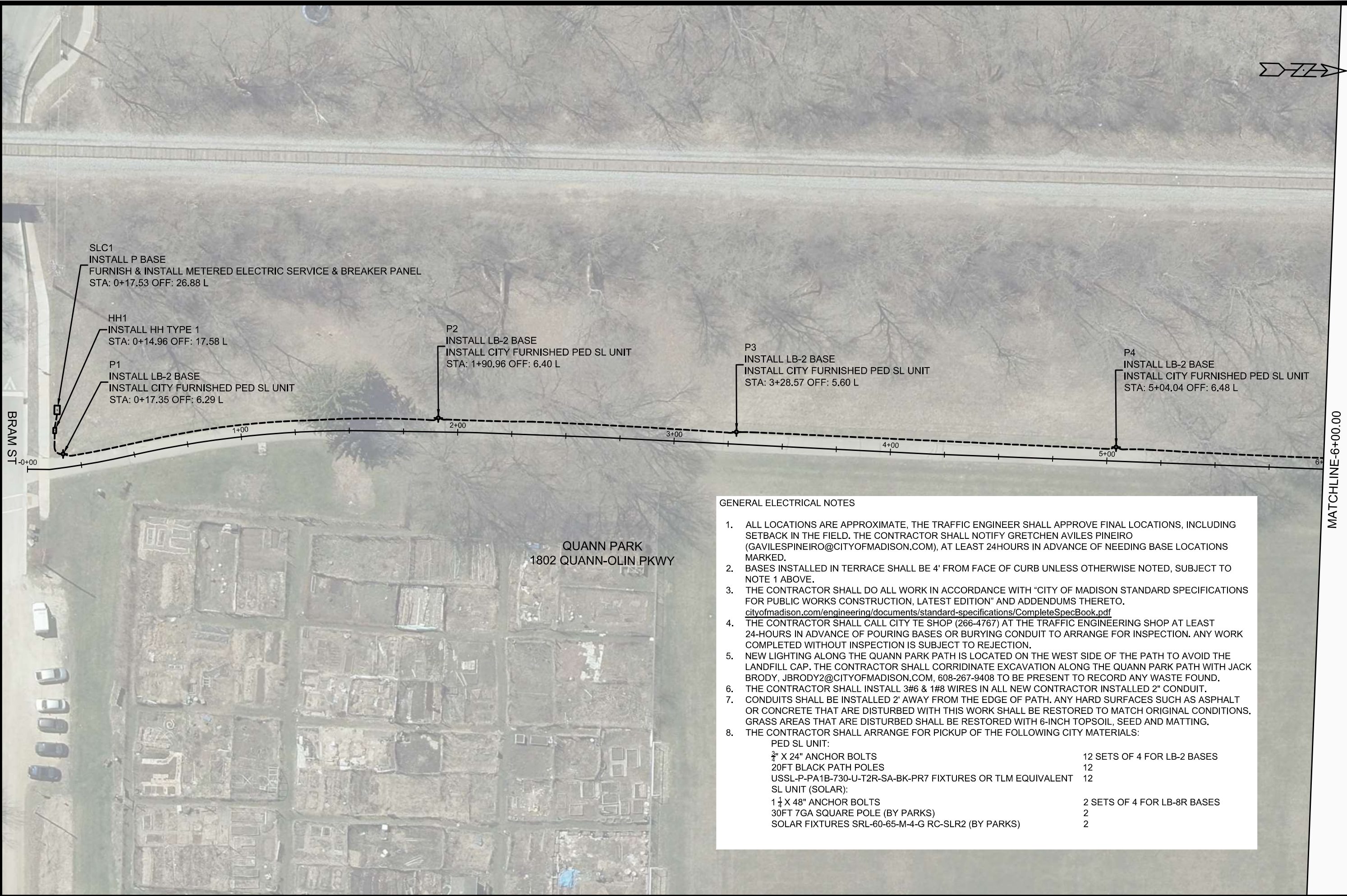
07/30/2025

PLOT SCALE: 1" = 1'

PLOT NAME: ----

REV. DATE: 7/29/2025 2:50 PM

ORIGINATOR: CITY_OF_MADISON



MATCHLINE-6+00.00

- GENERAL ELECTRICAL NOTES
- ALL LOCATIONS ARE APPROXIMATE, THE TRAFFIC ENGINEER SHALL APPROVE FINAL LOCATIONS, INCLUDING SETBACK IN THE FIELD. THE CONTRACTOR SHALL NOTIFY GRETCHEN AVILES PINEIRO (GAVILESPINEIRO@CITYOFMADISON.COM), AT LEAST 24HOURS IN ADVANCE OF NEEDING BASE LOCATIONS MARKED.
 - BASES INSTALLED IN TERRACE SHALL BE 4' FROM FACE OF CURB UNLESS OTHERWISE NOTED, SUBJECT TO NOTE 1 ABOVE.
 - THE CONTRACTOR SHALL DO ALL WORK IN ACCORDANCE WITH "CITY OF MADISON STANDARD SPECIFICATIONS FOR PUBLIC WORKS CONSTRUCTION, LATEST EDITION" AND ADDENDUMS THERETO.
cityofmadison.com/engineering/documents/standard-specifications/CompleteSpecBook.pdf
 - THE CONTRACTOR SHALL CALL CITY TE SHOP (266-4767) AT THE TRAFFIC ENGINEERING SHOP AT LEAST 24-HOURS IN ADVANCE OF POURING BASES OR BURYING CONDUIT TO ARRANGE FOR INSPECTION. ANY WORK COMPLETED WITHOUT INSPECTION IS SUBJECT TO REJECTION.
 - NEW LIGHTING ALONG THE QUANN PARK PATH IS LOCATED ON THE WEST SIDE OF THE PATH TO AVOID THE LANDFILL CAP. THE CONTRACTOR SHALL CORRIDINATE EXCAVATION ALONG THE QUANN PARK PATH WITH JACK BRODY, JBRODY2@CITYOFMADISON.COM, 608-267-9408 TO BE PRESENT TO RECORD ANY WASTE FOUND.
 - THE CONTRACTOR SHALL INSTALL 3#6 & 1#8 WIRES IN ALL NEW CONTRACTOR INSTALLED 2" CONDUIT.
 - CONDUITS SHALL BE INSTALLED 2' AWAY FROM THE EDGE OF PATH. ANY HARD SURFACES SUCH AS ASPHALT OR CONCRETE THAT ARE DISTURBED WITH THIS WORK SHALL BE RESTORED TO MATCH ORIGINAL CONDITIONS. GRASS AREAS THAT ARE DISTURBED SHALL BE RESTORED WITH 6-INCH TOPSOIL, SEED AND MATTING.
 - THE CONTRACTOR SHALL ARRANGE FOR PICKUP OF THE FOLLOWING CITY MATERIALS:
PED SL UNIT:
3/4" X 24" ANCHOR BOLTS 12 SETS OF 4 FOR LB-2 BASES
20FT BLACK PATH POLES 12
USSL-P-PA1B-730-U-T2R-SA-BK-PR7 FIXTURES OR TLM EQUIVALENT 12
SL UNIT (SOLAR):
1 1/4" X 48" ANCHOR BOLTS 2 SETS OF 4 FOR LB-8R BASES
30FT 7GA SQUARE POLE (BY PARKS) 2
SOLAR FIXTURES SRL-60-65-M-4-G RC-SLR2 (BY PARKS) 2

DESIGNED BY	DATE	BY
71022	7/30/2025	E-1

71022
MADISON, WI
CONTRACT NO: 9677

ELECTRICAL PLAN - QUANN PARK LH008.23
QUANN PARK LIGHTING PROJECT
C:\Users\lingma\Desktop\Quann Park\Quann Park Path Lighting.dwg



71022
E-1

MATCHLINE-6+00.00

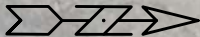
P5
INSTALL LB-2 BASE
INSTALL CITY FURNISHED PED SL UNIT
STA: 6+75.77 OFF: 6.07 L

P6
INSTALL LB-2 BASE
INSTALL CITY FURNISHED PED SL UNIT
STA: 8+55.45 OFF: 6.39 L

P7
INSTALL LB-2 BASE
INSTALL CITY FURNISHED PED SL UNIT
STA: 10+25.34 OFF: 7.04 L

QUANN PARK
1802 QUANN-OLIN PKWY

MATCHLINE-12+00.00



ELECTRICAL PLAN - QUANN PARK LH008.23

QUANN PARK LIGHTING PROJECT

C:\Users\ingma\Desktop\Quann Park\Quann Park Path Lighting.dwg

71022

MADISON, WI

9677

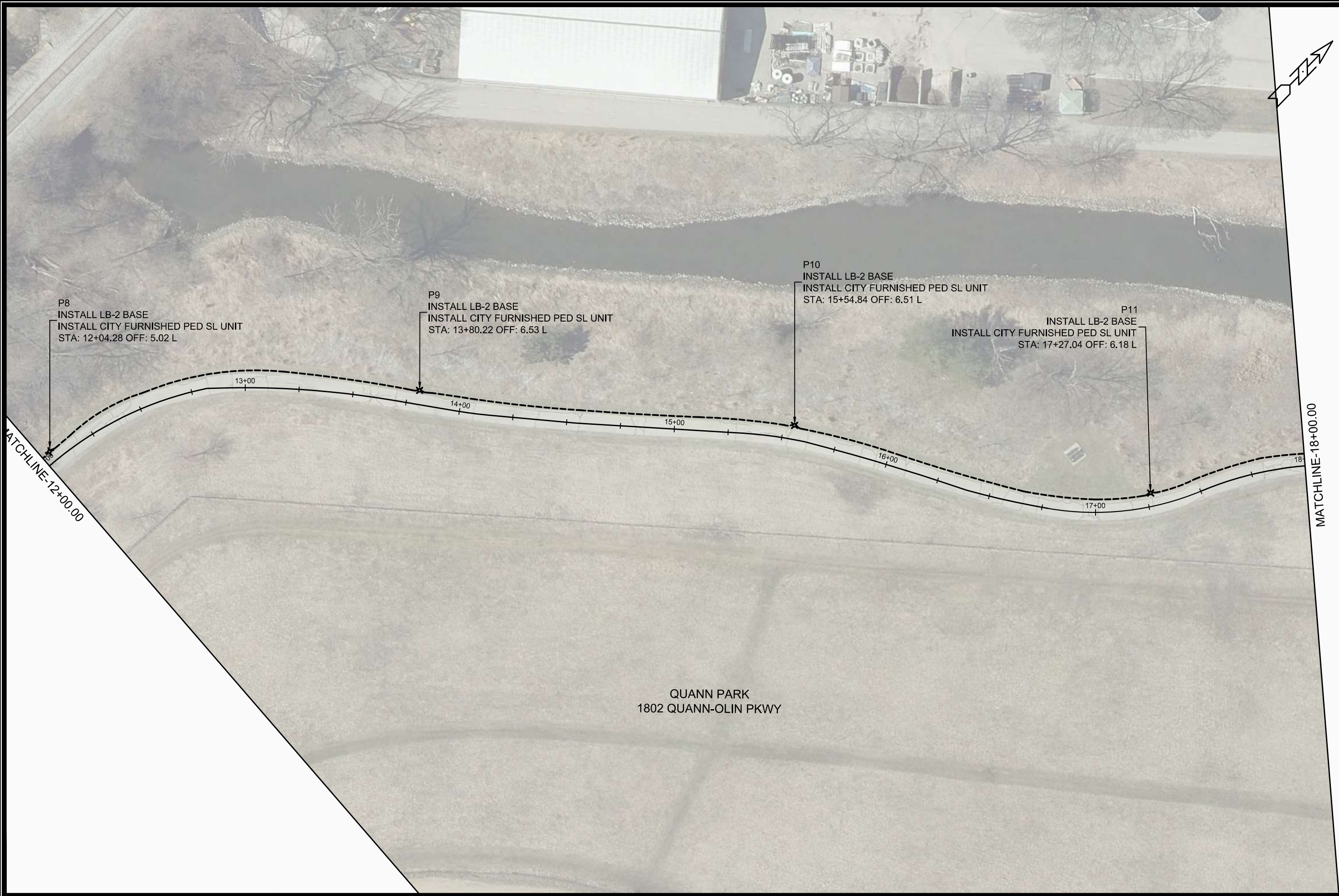
CONTRACT NO:



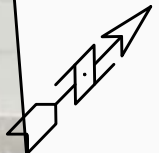
71022

E-2

MARK	REVISION	DATE	BY
71022	7/29/2025 3:28 PM	7/29/2025 3:28 PM	E-2
Designed By: GMA	71022	Scale: 1"=40'	



QUANN PARK
1802 QUANN-OLIN PKWY



71022
E-3

ELECTRICAL PLAN - QUANN PARK LH008.23

QUANN PARK LIGHTING PROJECT

C:\Users\lmgma\Desktop\Quann Park\Quann Park Path Lighting.dwg

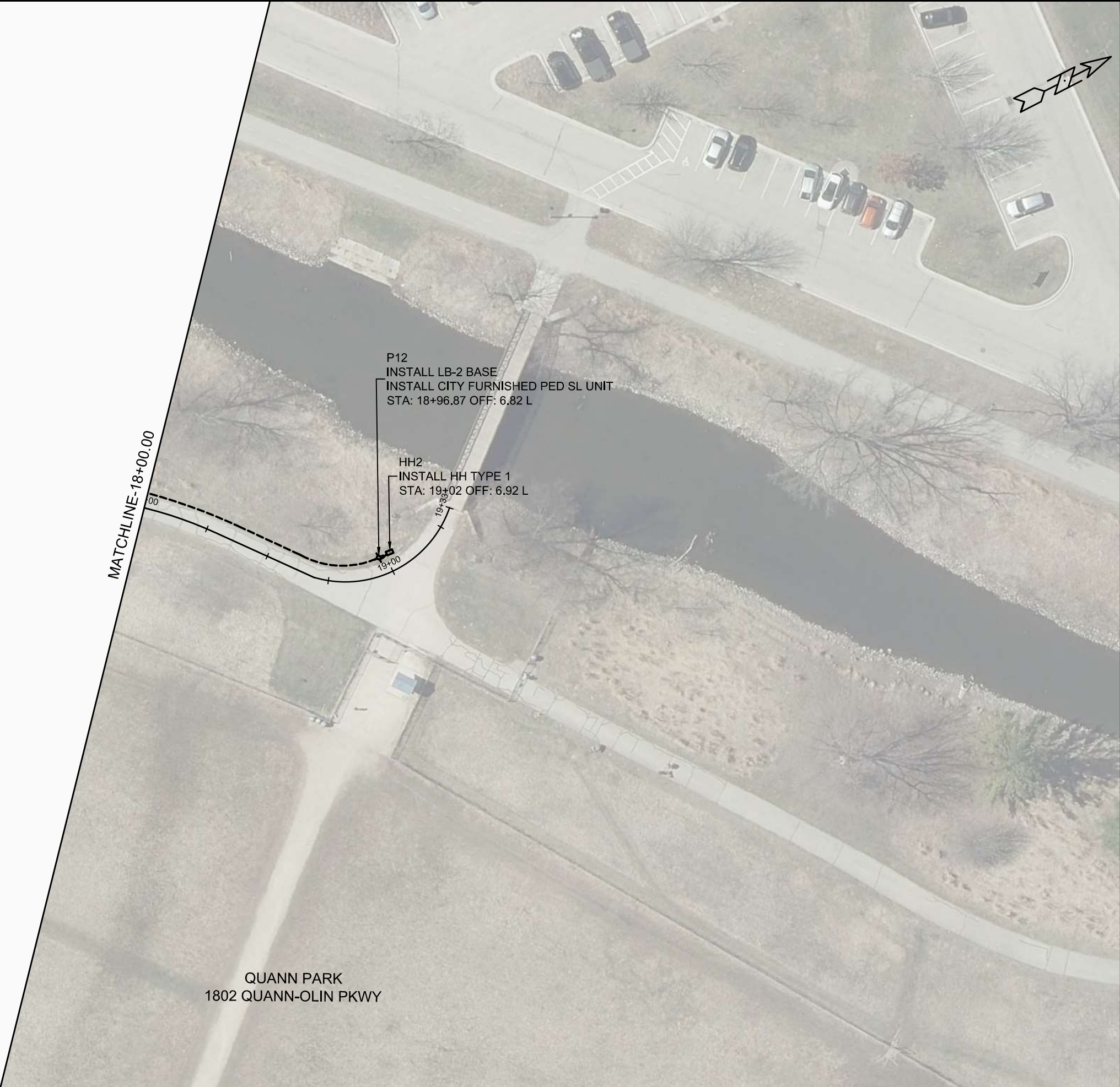
71022

MADISON, WI

9677

CONTRACT NO:

MARK	REVISION	DATE	BY
71022	7/29/2025 3:28 PM	7/29/2025 3:28 PM	E-3
Designed By: GMA	Date: 7/29/2025 3:28 PM	Scale: 1"=40'	



QUANN PARK
1802 QUANN-OLIN PKWY

DESIGNED BY	DATE	BY
71022	7/29/2025 3:30 PM	E-4
MARK	REVISION	DATE
71022	7/29/2025 3:30 PM	E-4

71022	MADISON, WI	9677
CONTRACT NO:		
ELECTRICAL PLAN - QUANN PARK LH008.23		
QUANN PARK LIGHTING PROJECT		
C:\Users\lmgma\Desktop\Quann Park\Quann Park Path Lighting.dwg		



71022
E-4



FISHER ST

PENN PARK
2101 FISHER ST

SL1
INSTALL LB-8R BASE
CONTACT CITY TE ENGINEER (GRETCHEN AVILES
PINEIRO, GAVILESPINEIRO@CITYOFMADISON.COM)
TO MARK BASE LOCATION.
INSTALL CITY FURNISHED SL UNIT
*THIS IS A SOLAR FIXTURE

SL2
INSTALL LB-8R BASE
CONTACT CITY TE ENGINEER (GRETCHEN AVILES
PINEIRO, GAVILESPINEIRO@CITYOFMADISON.COM)
TO MARK BASE LOCATION.
INSTALL CITY FURNISHED SL UNIT
*THIS IS A SOLAR FIXTURE



MARK	REVISION	DATE	BY
71022	7/30/2025 9:43 AM	1"=20'	E-5

71022	MADISON, WI	9677
CONTRACT NO:		

